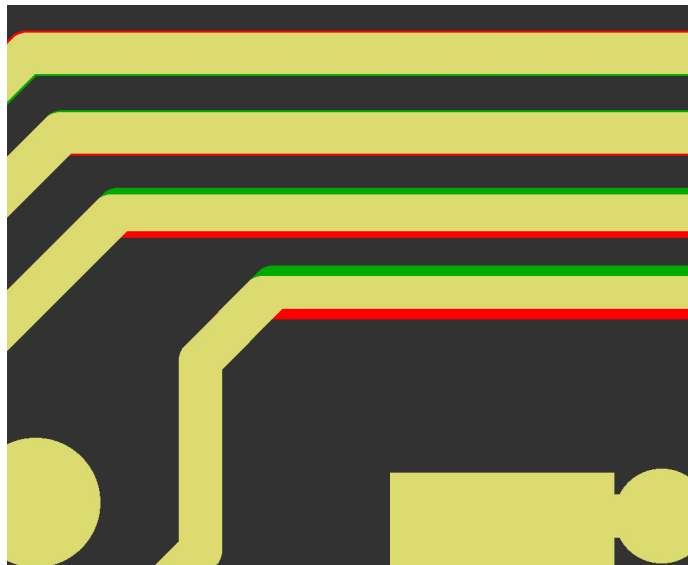


# YELO Copper Adjuster

## Features

- Partial track move
- Expand Ring to Optimum and Shave partially to Minimum
- Remove small regions
- Different ring sizes for different hole types Mech. Via, Laser Via, Component and Mechanical
- Via pad stack Move
- Split up SNS threshold according to the object type of the involved objects
- Parallelizing Copper Adjuster Process
- Repair for plated slots
- Same net spacing (SNS) check now can run with one general threshold or more detailed with different thresholds depending on the type of involved objects
- Removal of Non-functional pads on inner layers



## Benefits

- Eliminates manual steps
  - Accept more challenging PCB designs
  - Improve board layouts in minutes
  - Cut your CAM time by up to 30%
  - Deliver more reliable PCBs
  - Lower production costs on every batch
-

Ucamco  
Bijenstraat 19

9051 Gent  
Belgium

•Cut your CAM time by up to 30%