

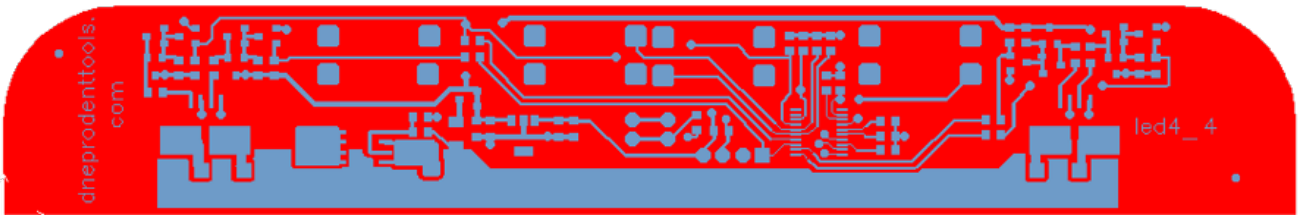
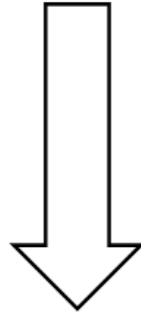
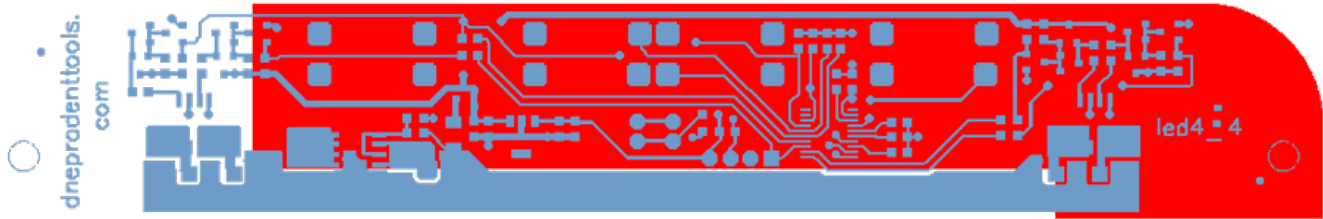
# UcamX WE (Workflow Edition)

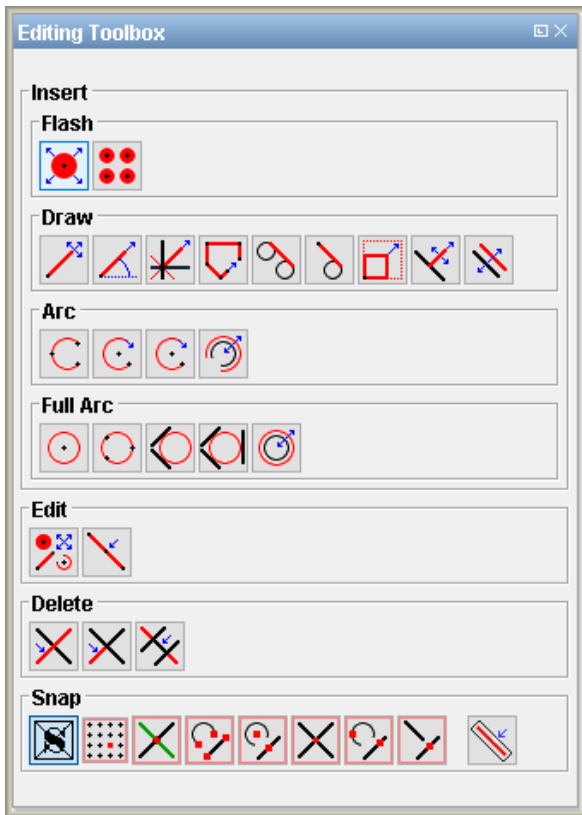
## Features

- Full-blown graphical editor for addressing any issues in the incoming data
- Directly accessible from within Cockpit
- Provides high-end editing tools to
  - Add a missing outline to a job or correct a faulty one
  - Register low-info or highly symmetrical layers manually in case the automatic layer registration was inaccurate
  - Set the correct layer polarity
  - Eliminate duplicate layers from the job stackup
  - Add gold mask or peel-off layers to the job that are not available in the customer archive
  - Merge split layers together (e.g. 1 layer with pads – 1 layer with traces to make for 1 physical copper layer)
  - Read in the odd legacy Gerber data set that still comes with old-school aperture lists
  - Examine netcompare errors reported by the AutoReference option
  - ...

Ucamco  
Bijenstraat 19

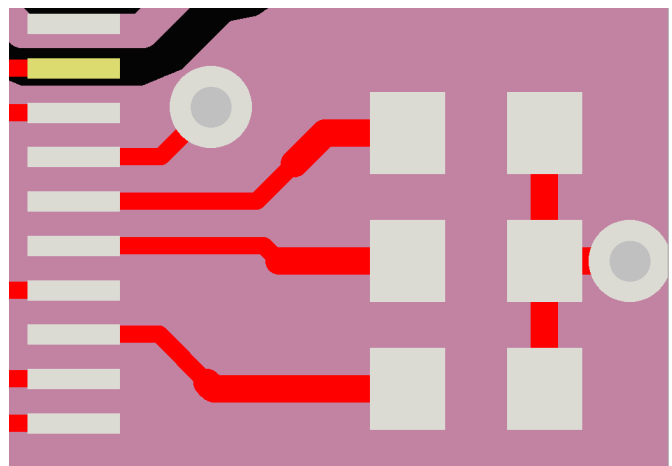
9051 Gent  
Belgium





## Benefits

- Accuracy: adding missing vital information to the Integr8tor job (outline, gold-plated areas, ...) provides for the most accurate analysis and quotation data
- Efficiency:
  - Resolve data inconsistencies "on-line" in Integr8tor, without having to take the job off-line to a CAM engineer. A job with an issue continues its flow within minutes
  - UcamX WE is floating. Use it from any Cockpit on the network
  - UcamX WE uses a private set of licenses - no interference with the pool of licenses for your CAM department
- Cost-effectiveness: UcamX WE comes free of charge as part of and for the duration of your maintenance contract
- Ease-of-use: UcamX WE comes with a very intuitive and customizable user interface and requires a very short learning curve



Ucamco  
Bijenstraat 19

9051 Gent  
Belgium

