

UcamX v2022.09

UcamX v2022.09

We proudly present the latest version of our groundbreaking CAM software for Rigid, Flex and HDI PCBs.

Upgrade now to enjoy all the exciting new functionality!



YELO

Extensions to
YELO Mask Adjuster

YELO Mask Adjuster

Extensions

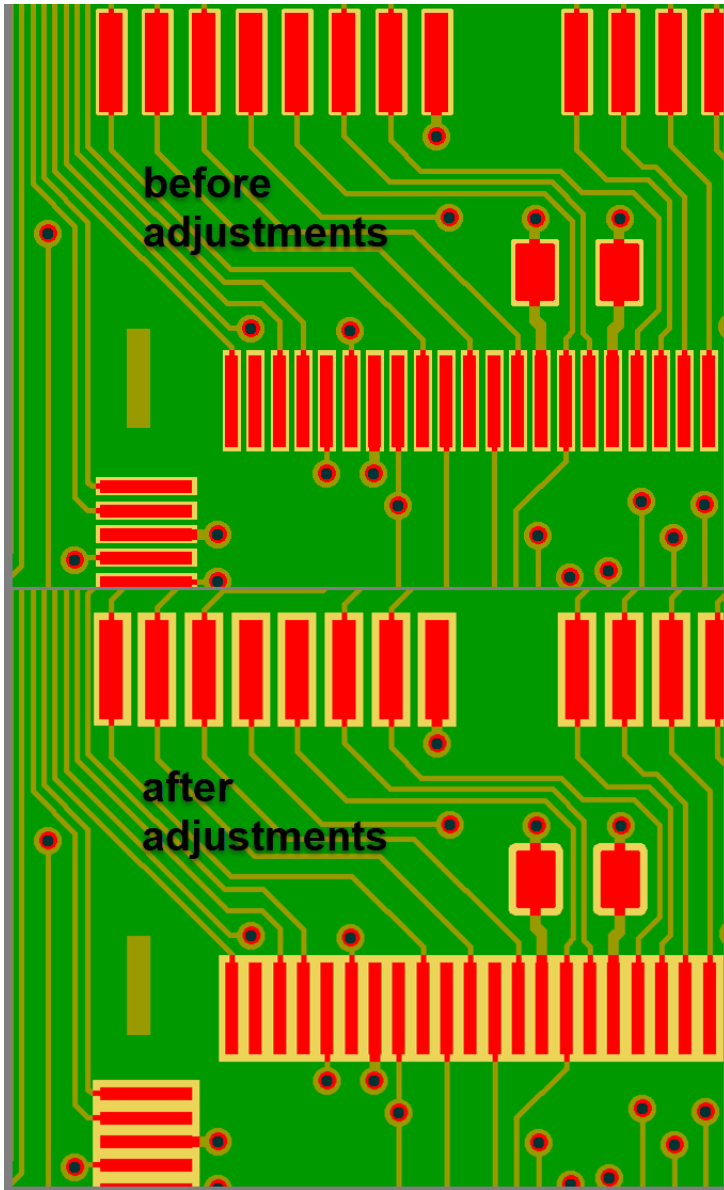
- Functionality to **merge SMD mask openings**
Automatically handle denser boards
- Undo on Mask Adjuster actions
Easy usage
- Create mask openings on **non-plated holes**
Reduce manual labor
- Functionality to handle **fiducials**
Add the attribute "uFlashType: FiducialPad" on fiducials
-> YELO Mask Adjuster does the rest
- Converter for **parameter-sets** from old to the new Mask Adjuster available
please contact us at support@ucamco.com

(Upgrade free of charge for users under maintenance with the Soldermask Optimizer license)

Merge SMD mask openings

Ucamco
Bijenstraat 19

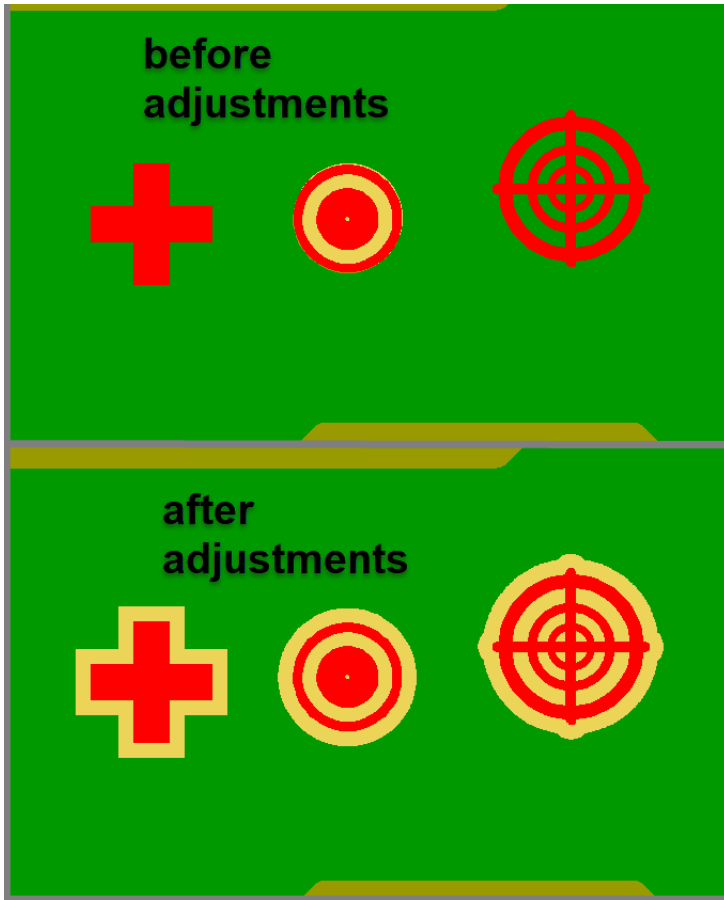
9051 Gent
Belgium



New option to handle fiducials

Ucamco
Bijenstraat 19

9051 Gent
Belgium



Electrical test

Optimization

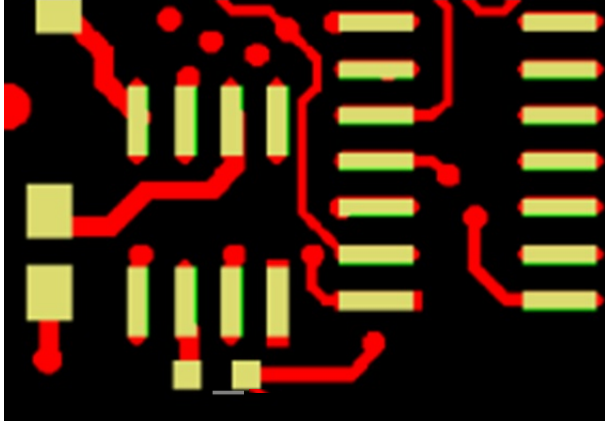
- Optimized testpoint generation for **long pads**
Less manual work

(Free of charge for users under maintenance with the corresponding license)

Ucamco
Bijenstraat 19

9051 Gent
Belgium

Result with new additional key:
testpoint.lengthy_pads.merge_always: 1



ucam.db

Settings

- **New defaults** in ucam.db
More standard settings available / less intervention of Ucamco support

(Free of charge for users under maintenance)

List of additional default settings:

```
gerber.input.Profile: extra,outline,none // Mapping of Gerber X2 outline
setup.options.sel_mode: all // Show selections on all visible planes
setup.options.zeropoint: 1 // Display zero point
setup.statusbar.place: workspace // Place the status bar below main drawing area
tiffin.keep_pixel_shape: 2 // No contour generation on tiff input
vhs.muri.on: step // Allow undo in VHS scripts
vhs.init.scripts: HOME:vhs\\init // Location of VHS library
excellon2.M00_change_tool: 1 // Increase tool number in case of M00
iterate.nested.pcb.images: 1 // Allow job netlist with nested PCBs
job.change.reload.workspace: false // No reload of workspace if a job gets loaded
job.inp.sortorder: f // Sort jobs by file type in SmartStart
testpoint.handle_painted_pads.auto_on: 0 // No automatic activation of Handle painted pads
dxf.k_arc: CIR_0.01mm // Definition of default draws size in DXF
dxf.k_circle: CIR_0.01mm // Definition of default draws size in DXF
dxf.k_leader: CIR_0.01mm // Definition of default draws size in DXF
dxf.k_line: CIR_0.01mm // Definition of default draws size in DXF
layer.outer: outer // Default definition of outer layers
```

Ucamco
Bijenstraat 19

9051 Gent
Belgium

Ucam.properties

Settings

- **New settings** in Ucam.properties file
Predelivered, most commonly used settings as default

(Free of charge for users under maintenance)

List of additional settings:

| | |
|--|--|
| netfix_netbuild_tb.set: 1 | // Switching on: the Build Netlist toggle in utest |
| netfix_tstpoints_tb.set: 1 | // Switching on: Testpoint toggle in utest |
| cnt_type_true.set: true | // Defines exact contourize as default in Contour Handling |
| NetCompareCheckNewFlash.selected: 1 | // Switching on: check missing flashes |
| NetCompareUseOutline.selected: 1 | // Switching on: ignore nets outside outline |
| NetCompare.outlineMarginUnitField.value: 0.5 | // Margin for ignore nets outside outline |
| NetCompareIgnoreNPTHads.selected: 1 | // Switching on: Ignore Copper on NPTH |
| NetCompare.npthMarginUnitField.value: 0.8 | // Margin for Ignore Copper on NPTH |
| NetCompareBuildNetlist.set: true | // Switch on: Build Job Netlist |
| uisel_crossing.set: true | // Switching on: Select Crossing in Selections |
| ujobinput_keep_extension.set: true | // SmartStart keeps extensions during input |
| smartdrc_check_buildnetlist.set: true | // Switching on: Build Netlist in SmartDRC |
| ImageCompare_AutoAlignToggle.selected: 1 | // Switching on: AutoAlign for external jobs |
| cpt_net_tog: true | // Switching on: Use Netlist in Connect Track. |

Excellon 2

Input

- Optimized NC file input, reading aperture and file attributes
More information transferred from CAD automatically

(Free of charge for users under maintenance with the corresponding license)

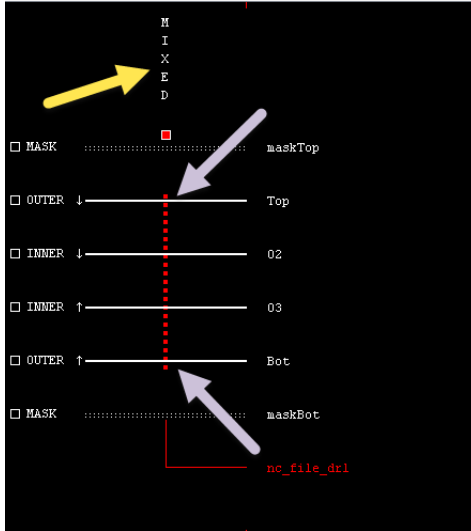
Ucamco
Bijenstraat 19

9051 Gent
Belgium

```

M48
; #@! TF.FileFunction, MixedPlating, 1, 4
FMAT, 2
METRIC
    
```

Automatic subclass and drill span setting:



File content:

```

; #@! TA.AperFunction, ComponentDrill, Plated, PTH
T7C1.100
; #@! TA.AperFunction, ComponentDrill, NonPlated, NPPTH
T15C4.300
    
```

Information available on the apertures:

| NR | NAME | DEF | PL | F/R | D |
|----|----------|-----|-----|-----|---|
| 2 | CIR,0.7 | 1P | 1 | | |
| 3 | CIR,0.75 | 1P | 9 | | |
| 4 | CIR,0.8 | 1P | 156 | | |
| 5 | CIR,0.9 | 1P | 6 | | |
| 6 | CIR,1 | 1P | 49 | | |
| 7 | CIR,1.1 | 1P | 3 | | |
| 8 | CIR,1.2 | 1P | 4 | | |
| 9 | CIR,1.27 | 1P | 3 | | |

| NR | NAME | DEF | PL | F/R | D |
|----|----------|-----|----|-----|---|
| 8 | CIR,1.2 | 1P | 4 | | |
| 9 | CIR,1.27 | 1P | 3 | | |
| 10 | CIR,1.3 | 1P | 2 | | |
| 11 | CIR,1.5 | 1P | 2 | | |
| 12 | CIR,2 | 1P | 2 | | |
| 13 | CIR,3.2 | 1P | 2 | | |
| 14 | CIR,3.5 | 1P | 1 | | |
| 15 | CIR,4.3 | 1P | 4 | 2 | |

Attribute List: Aperture 7

Attribute Name:

Value:

Add/Modify Delete

g.AperFunction=ComponentDrill,Plated,PTH

Close

Attribute List: Aperture 15

Attribute Name:

Value:

Add/Modify Delete

g.AperFunction=ComponentDrill,NonPlated,NPPTH

Close

Ucamco
Bijenstraat 19

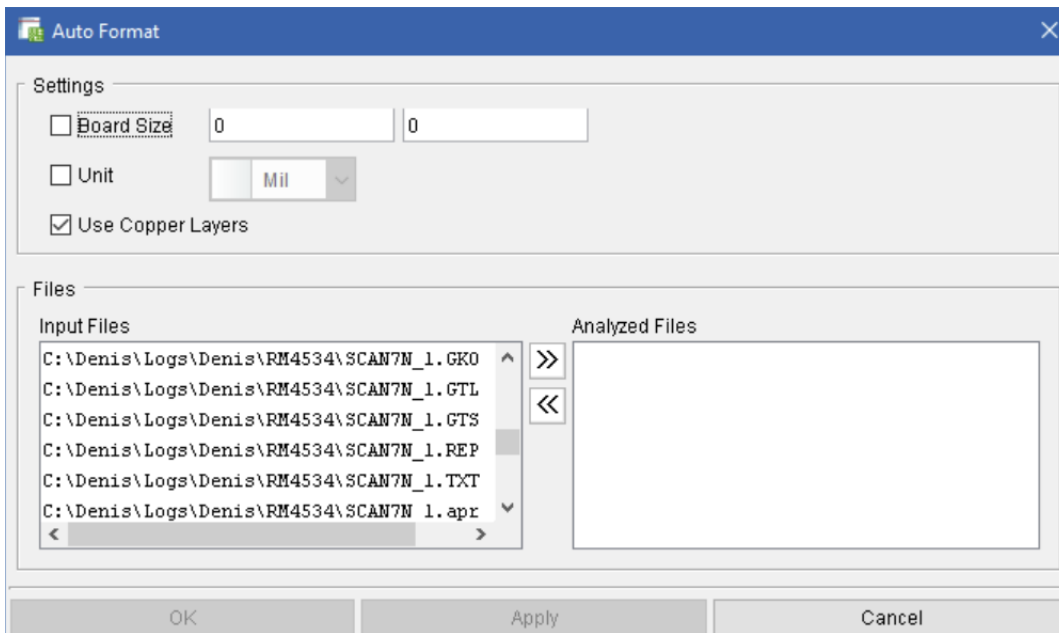
9051 Gent
Belgium

GAR

Input

- Vastly **improved Auto Format**
Automatic format detection in many more cases

(Free of charge for users under maintenance with the corresponding license)



And more ...

UcamX v2022.09 comes with a host of [fixes](#) for issues you have cared to report.

Please keep on doing so. Your feedback is highly appreciated.

Thank you

The major open issues are listed in the file [Open_Issues_yymmdd.txt](#) in the version folder of the FTP sites. This is important information. Please monitor these issues.

Install v2022.09

The installer can be downloaded from the Ucamco FTP download server.
We recommend that you use an FTP client to do so, as most browser no longer support FTP.

We recommend installing this update at your earliest convenience.

For any further questions you may have, please contact our local business partner or the Ucamco helpdesk.

We thank you for choosing a Ucamco product.

Detailed demo

The video below provides a more technical, in-depth look at the newest version of UcamX. Click play to start the video, or watch it directly on our [YouTube channel](#).

Ucamco
Bijenstraat 19

9051 Gent
Belgium