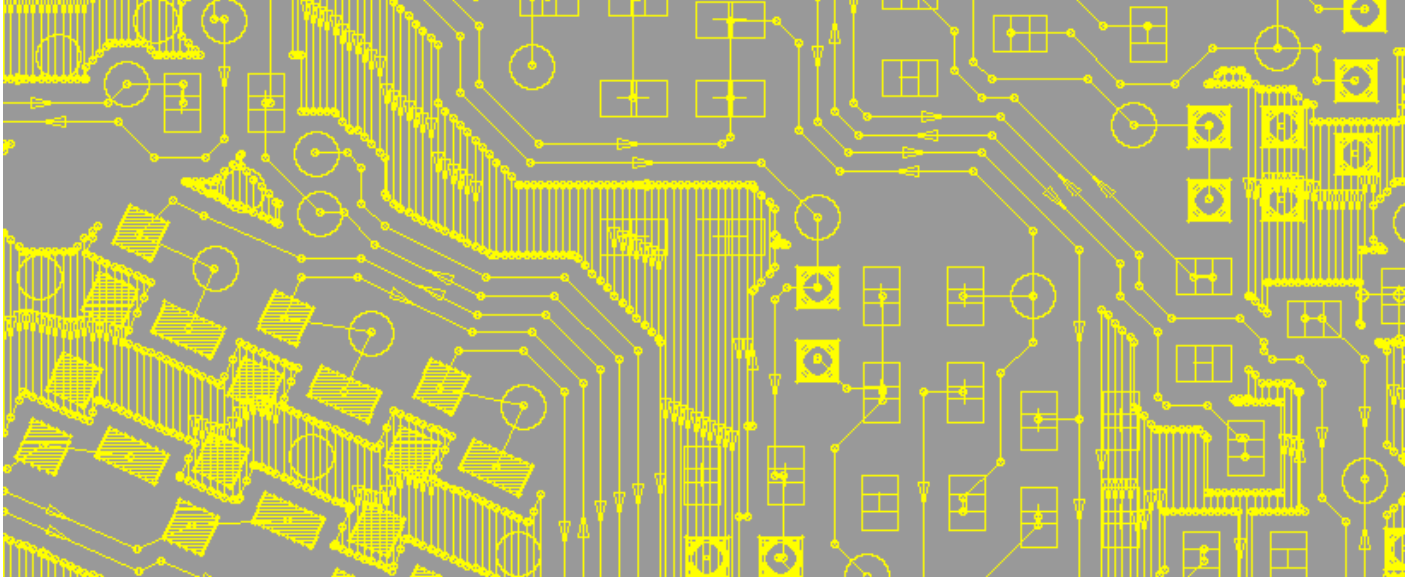


AutoRebuild

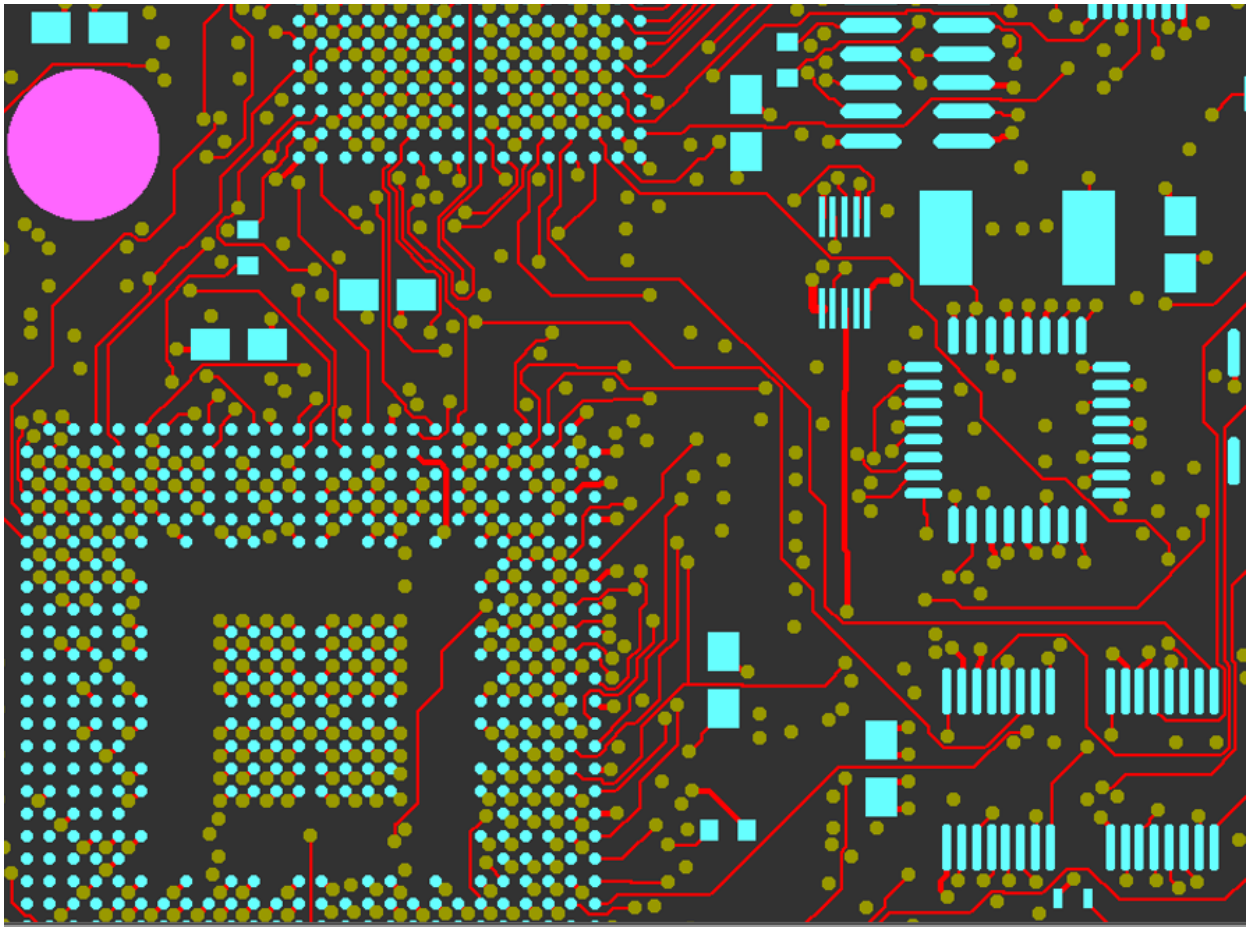
Features

- AutoRebuild restores the intelligence lost in translation from CAD to CAM
- - PadMaker: replaces the painted pads from the incoming data with flashed pads
 - RegionMaker: converts painted areas to contour areas
 - AutoReverse: switches the polarity of copper layers in which the data describes clearances in the copper rather than the copper itself
 - AutoMarkup: Copper pads and drill tools are marked with designated attributes so that their further processing later on in CAM can be done more intelligently
 - Copper pads: SMD pads, BGA pads, Component pads, Via Pads, Fiducial pads ...
 - Drill tools: Component hole, Non-plated hole, Via hole,...
- AutoRebuild exports an enhanced version of the input data to DPF, Gerber or ODB++ for further processing on CAM



Benefits

- Reduced CAM time: starting from the optimized data from AutoRebuild, CAM processing times may drop by up to 30% and more
- Data optimization: RegionMaker and PadMaker substantially reduce the amount of data. Less data means faster software response times
- Improved User Experience: faster software response times causes less CAM operator idle time and vastly contributes to a more pleasant user experience
- Automation: the intelligence introduced by AutoMarkup allows for smarter and much more sophisticated automation on CAM. A wide range of CAM functionality like DRC, Repair, drill tool compensation, etch compensation, solder mask optimization... stands to benefit from the additional AutoMarkup information in an AutoRebuilt data set
- Security: AutoRebuilt is backed up by powerful netlist and image comparison tools to guarantee absolute data integrity



Pad Type	Color	Hide	Number
BGAPadCuDef		<input type="checkbox"/>	836
BGAPadSMDef		<input type="checkbox"/>	0
ComponentPad		<input type="checkbox"/>	167
ConnectorPad		<input type="checkbox"/>	0
NoPad		<input type="checkbox"/>	2
SMDPadCuDef		<input type="checkbox"/>	639
SMDPadSMDef		<input type="checkbox"/>	0
TestPad		<input type="checkbox"/>	0
UnknownPad		<input type="checkbox"/>	0
ViaPad		<input type="checkbox"/>	1782
WasherPad		<input type="checkbox"/>	0